



FELLOWPA

FINGER LAKES - LAKE ONTARIO WATERSHED PROTECTION ALLIANCE

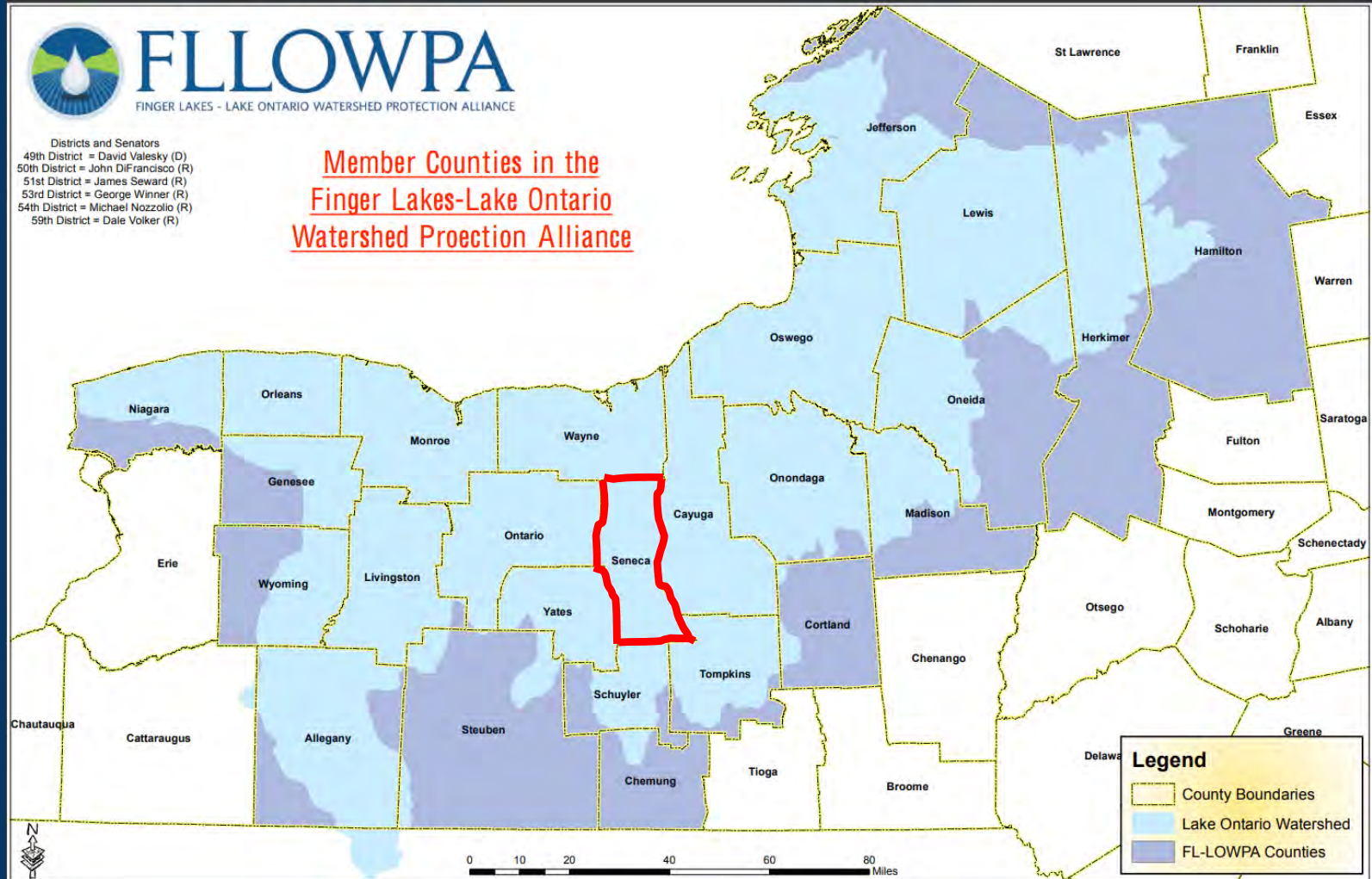


FLLowPA

FINGER LAKES - LAKE ONTARIO WATERSHED PROTECTION ALLIANCE

Districts and Senators
49th District = David Valesky (D)
50th District = John DiFrancisco (R)
51st District = James Seward (R)
53rd District = George Winner (R)
54th District = Michael Nozzolo (R)
59th District = Dale Volker (R)

Member Counties in the Finger Lakes-Lake Ontario Watershed Protection Alliance



Seneca County's FLOWPA History

Seneca County SWCD was part of original Finger Lakes Aquatic Vegetation Control Program (AVCP) in the 1980's which was created due to dense growth of nuisance aquatic vegetation in Cayuga Lake.

Making Weed Harvesting Seneca County's primary focus until about 2012.

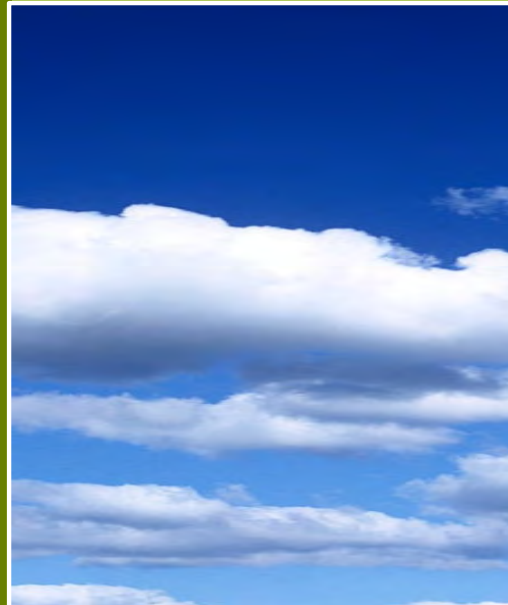


Invasives



Seneca's FL-LOWPA Program Areas

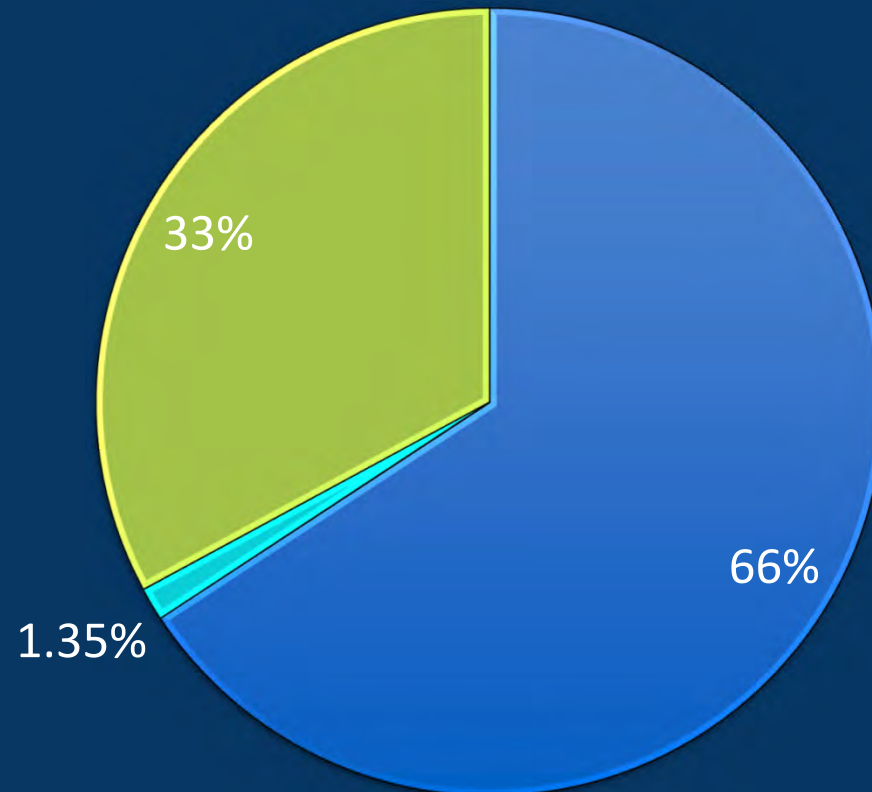
Education



BMPs



Seneca County SWCD's FLOWPA Funding



■ Installation of BMPs ■ Public Education & Outreach ■ Invasive Species Control

Invasives

Mechanical Weed Harvesting

✦ The Seneca County SWCD owns 2 Aquatic Plant Harvesters

✦ One 2007 Aquamarine model# H9-800

9 ft. cut, 800 cu.ft. storage capacity

✦ One 2012 Aquamarine model #H7-320

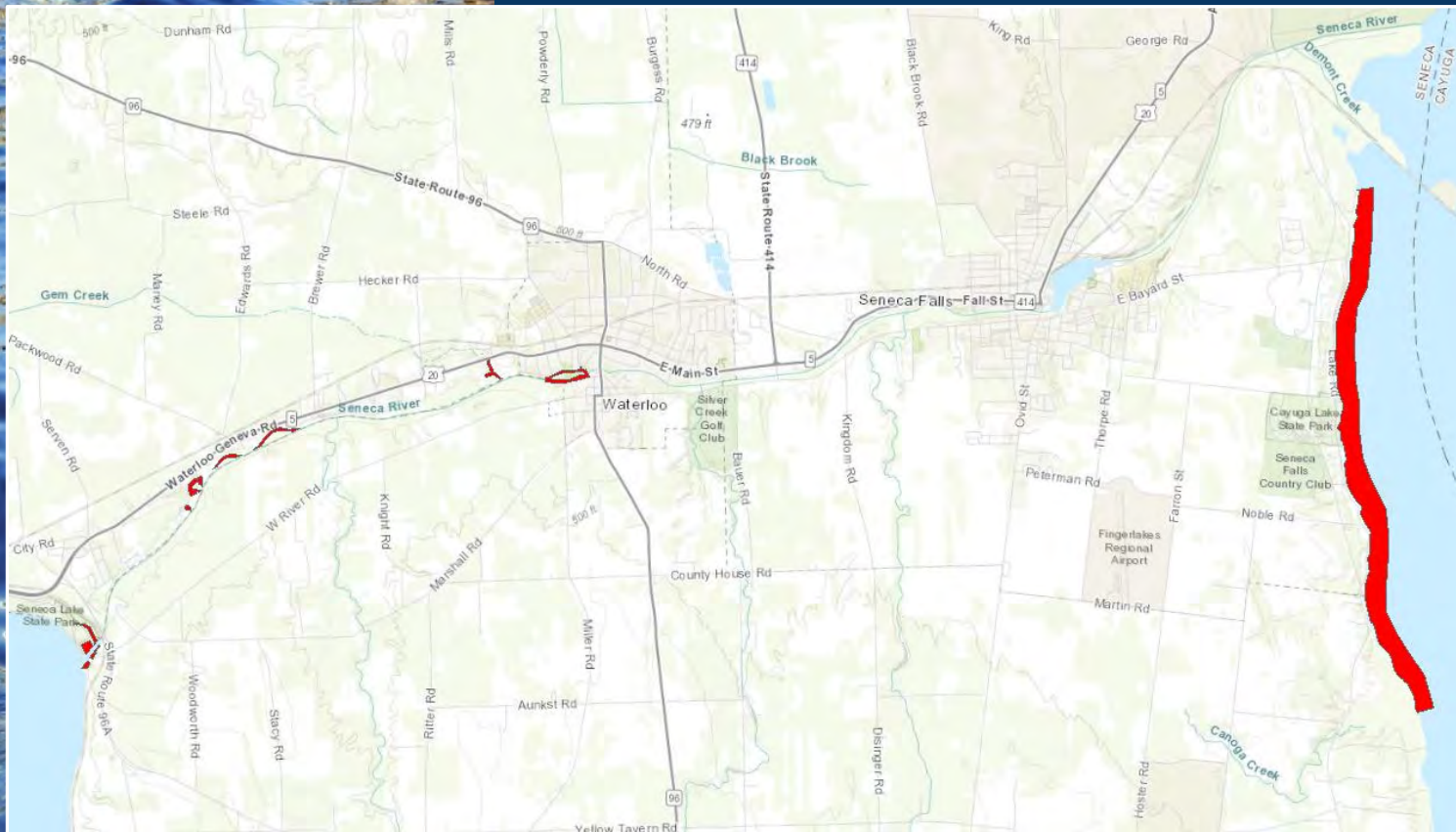
7 ft. cut 320 cu.ft. storage capacity

✦ Typical Harvesting Season: Early/Mid July - Labor Day



Invasives

Mechanical Weed Harvesting



2 Harvesting areas

- 🌿 Northern Cayuga Lake
- 🌿 Cayuga – Seneca Canal & Seneca Lake State Park

Invasives

Mechanical Weed Harvesting

🌿 Northern Cayuga Lake

2010 – 81 loads – 729 tons
2011 – 134 loads – 1206 tons
2012 – 112 loads – 1008 tons
2013 – 105 loads – 945 tons
2014 – 147 loads – 1323 tons
2015 – 110 loads – 990 tons
2016 – 98 loads – 882 tons
2017 – 114 loads – 1026 tons
2018 – 77 loads – 693 tons
2019 – 108 loads – 1008 tons
2020 – 13 loads – 143 tons
2021 – 12 loads – 132 tons

🌿 Cayuga – Seneca Canal & Seneca Lake State Park

2010 – 20 loads – 100 tons
2011 – 21 loads – 105 tons
2012 – 42 loads – 210 tons
2013 – 64 loads – 320 tons
2014 – 74 loads – 370 tons
2015 – 45 loads – 225 tons
2016 – 43 loads – 215 tons
2017 – 69 loads – 345 tons
2018 – 34 loads – 120 tons
2019 – 33 loads – 165 tons
2020 – 67 loads – 335 tons
2021 – 41 loads – 205 tons

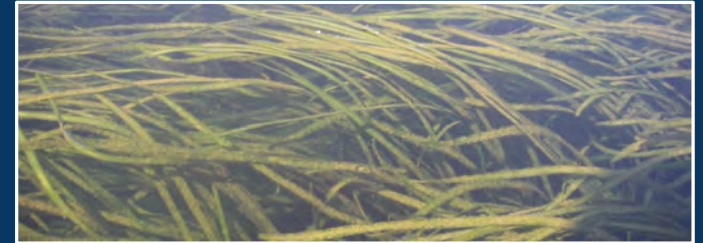
Approximately 800-1,000 tons of aquatic vegetation are removed from Seneca County waters annually.



Invasives

Mechanical Weed Harvesting

🌿 Eel Grass



🌿 Milfoil



🌿 Curly Leaf Pond Weed & various other native species



Invasives

Mechanical Weed Harvesting

🌿 Weeds are transferred from the Harvester to a shore conveyor that unloads onto a dump truck.

🌿 Weeds are transported to farms where they composted and eventually applied to the land.



Invasives

Mechanical Weed Harvesting



Thank you to Cayuga SWCD.

Invasives

Mechanical Weed Harvesting / Water Chestnut

⌘ Water Chestnut was discovered in the Northern end of Cayuga Lake in 2015. Seneca County SWCD mechanically harvested approx. 4 tons.



Invasives

Water Chestnut



🌿 2019 Seneca SWCD started partnering with Finger Lakes PRISM to conduct hand pulls to keep Water Chestnut at bay.

🌿 2019 – 80 pounds

🌿 2020 – 33 pounds

🌿 2021 – 10 pounds

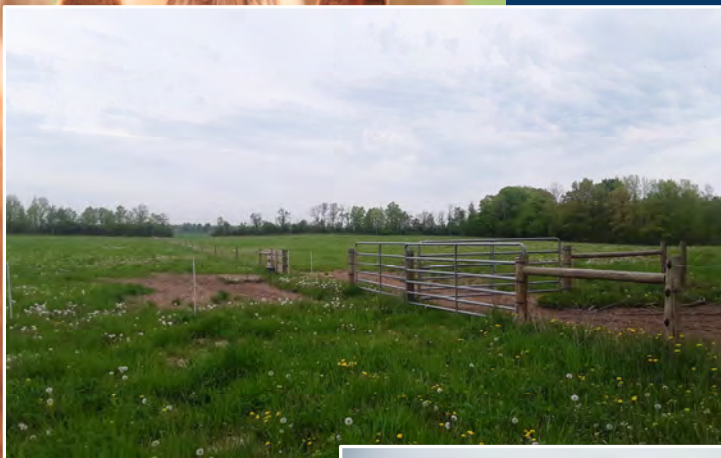
Education

- Envirothon
- Conservation Field Days for 6th graders
- Frank Knight Environmental Night
- Workshops
- Various Public Education events
- Various Agricultural Tours



Best Management Practices

Ag BMPs



90 acres of cropland converted to permanent grazing pasture with water for each paddock.



11 acres of cropland converted to grazing pasture.



Prescribed Rotational Grazing



Best Management Practices

Ag BMPs

before



after



before



after



Access Control System
&
Stream Crossing
Excludes animals from
ponds & streams

Management Practices

Ag BMPs



Prescribed Rotational Grazing
Watering Facilities



Best Management Practices

Ag BMPs

before



Grassed Waterway



after



after

Water & Sediment Control Basin



before

Best Management Practices

Ag BMPs



Roof Water
Collection

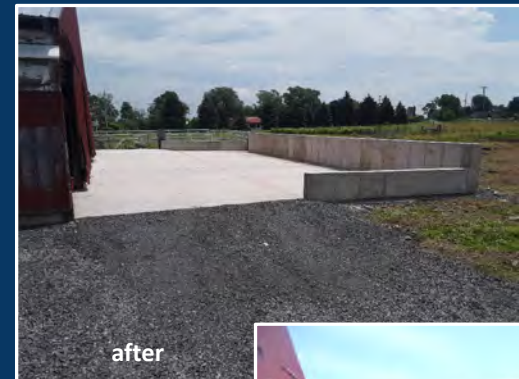


Best Management Practices

Ag BMPs



Heavy Use Area
Runoff
Management
System



Covered Barnyard



Manure Compost Facility

Best Management Practices

Ag BMPs



Soil Conservation System
Herbaceous Buffer
12 acres seeded to permanent
vegetation
to control erosion, reduce
runoff, and enhance soil
health.



Best Management Practices

Ag BMPs



Erosion control system
Replace undersized, leaking
pond overflow outlet to
prevent erosion and failure of
pond dike.

Best Management Practices

Critical Area Treatment

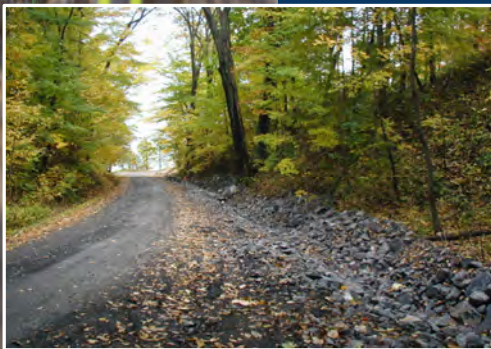


Hydroseed & Straw Mulch



Best Management Practices

Critical Area Treatment



Best Management Practices

Critical Area Treatment



Flood assistance & Turbidity Curtains



Best Management Practices

Critical Area Treatment



Streambank Stabilization





FELLOWPA

FINGER LAKES - LAKE ONTARIO WATERSHED PROTECTION ALLIANCE